

ONE
LIGHTBOX



The bright way to shine

INDEX

02-21

**TEXTILE
LIGHT BOX**

22-33

**NATURAL WOOD
LIGHT BOX**

34-47

**CUSTOM DESIGN
LIGHT BOX**

48-51

LED BOX

52-54

**PRINT
PACKAGE-PROFILES**

ONE
LIGHTBOX

TEXTILE

LIGHT BOX

NEW

PRODUCT



The background is a light gray with a fine, vertical, wood-grain-like texture. A large, solid purple circle is centered in the upper half of the image. From the bottom-left edge of this circle, a series of black and white diagonal streaks of varying lengths and thicknesses radiate outwards towards the bottom-left corner of the frame. The text 'TEXTILE LIGHT BOX' is centered within the purple circle in a white, bold, sans-serif font.

TEXTILE LIGHT BOX

TEXTILE LIGHT BOX



- Extra narrow frame for decorative application.
- Frame depth is 17mm.
- For an impressive optic in the indoor area.
- One-sided models available.
- It is easy to set up and has an optimal image changing system.
- Replaceable fabric with an elastic rubber band.
- Fabric can be made by request, as latex or UV printing.
- Is available in standard sizes and can also be made according to special sizes.
- Different frame colors available. On request, your own color samples can also be produced.
- The equipment for wall mounting will be sending with the product.
- This system is also available in disassembled version for easy transport.
- 2 years guarantee.
- Made in Turkey.

17 MM TEXTILE BOX

Colour



elex silver

Standart Sizes

A-4

A-3

A-2

A-1

A-0

B-2

B-1

B-0

100x120

120x180

200x300

★ Available in special sizes and colours



Non-Illuminated



One sided



Wall mountable





- Extra narrow frame for decorative application.
- Frame depth is 30 mm.
- For an impressive optic in the indoor area.
- One-sided models available.
- It is easy to set up and has an optimal image changing system.
- Replaceable fabric with an elastic rubber band.
- Fabric can be made by request, as latex or UV printing.
- Is available in standard sizes and can also be made according to special sizes.
- Different frame colors available. On request, your own color samples can also be produced.
- The equipment for wall mounting will be sending with the product.
- This system is also available in disassembled version for easy transport.
- 2 years guarantee.
- Made in Turkey.

30 MM TEXTILE BOX

Colours



elax silver

NEW



wood / 3901

NEW



wood / 3902

NEW



wood / 3903

NEW



wood / 3904

NEW



wood / 3905

Standart Sizes

A-4

A-3

A-2

A-1

A-0

B-2

B-1

B-0

100x120

120x180

200x300

★ Available in special sizes and colours



THE WORLD'S FIRST
NON-FLAMMABLE
NATURAL WOOD COATED
MATERIAL



Non-Illuminated



One sided



Wall mountable





- Extra narrow frame for decorative application.
- Frame depth is 50 mm.
- For an impressive optic in the indoor area.
- One sided and double sided models available.
- It is easy to set up and has an optimal image changing system.
- Replaceable fabric with an elastic rubber band.
- Fabric can be made by request, as latex or UV printing.
- Is available in standard sizes and can also be made according to special sizes.
- Different frame colors available. On request, your own color samples can also be produced.
- The equipment for ceiling mounting will be sending with the product.
- This system is also available in disassembled version for easy transport.
- 2 years guarantee.
- Made in Turkey.

50 MM TEXTILE BOX

Colours



elox silver

NEW



wood / 3901

NEW



wood / 3902

NEW



wood / 3903

NEW



wood / 3904

NEW



wood / 3905

Standart Sizes

A-4

A-3

A-2

A-1

A-0

B-2

B-1

B-0

100x120

120x180

200x300



★ Available in special sizes and colours



A2

THE WORLD'S FIRST
NON-FLAMMABLE
NATURAL WOOD COATED
MATERIAL



Non- Illuminated



Double sided



Ceiling mountable



Available as stand





- Extra narrow frame with LED backlighting for decorative application.
- Frame depth is 30 mm.
- For an impressive optic in the indoor area.
- One sided models available.
- The internal transformer is in the product.
- The LED's and transformer wich are used in this product are in accordance with International Standarts.
- 12 volt power consumption.
- For english / american plug request, please ask by ordering.
- Brightness of the lightning is between 1700-2500 LUX.
- It is easy to set up and has an optimal image changing system.
- Replaceable fabric with an elastic rubber band.
- Fabric can be made by request, as latex or UV printing.
- Is available in standard sizes and can also be made according to special sizes.
- Different frame colors available. On request, your own color samples can also be produced.
- The equipment for wall mounting will be sending with the product.
- Packaged as finished product.
- 2 years guarantee.
- Made in Turkey.

30 MM LIGHT BOX

Colours



elox silver

NEW



wood / 3901

NEW



wood / 3902

NEW



wood / 3903

NEW



wood / 3904

NEW



wood / 3905

Standart Sizes

A-3

A-2

A-1

A-0

B-2

B-1

100x120



Optional Control (ON-OFF)



★ Available in special sizes and colours



CE



THE WORLD'S FIRST
NON-FLAMMABLE
NATURAL WOOD COATED
MATERIAL



Illuminated



One sided

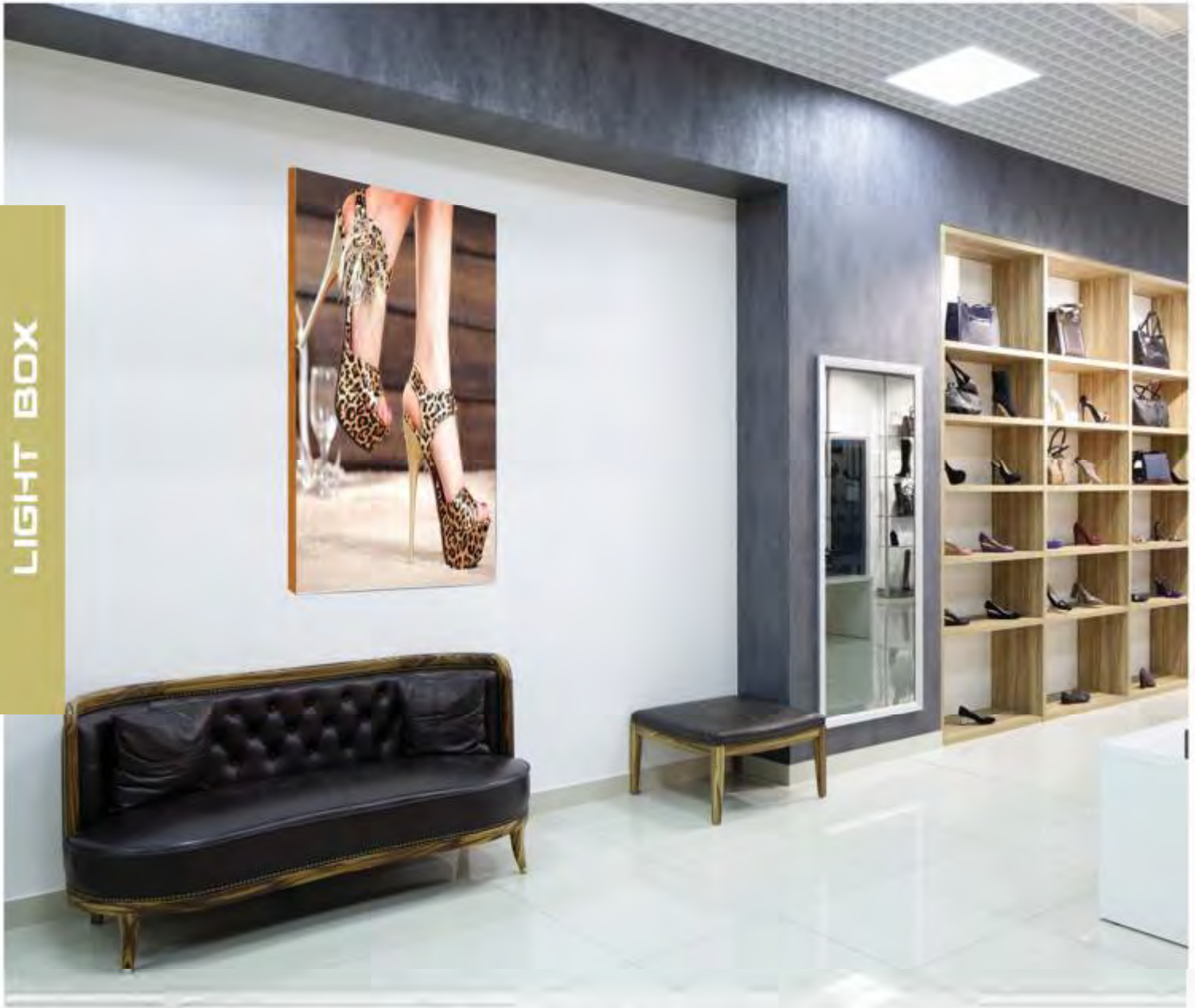


Backlight



Wall mountable





- Extra narrow frame with LED backlighting for decorative application.
- Frame depth is 45 mm.
- The backside is made of 4mm composite.
- For an impressive optic in the indoor area.
- One sided models available.
- The internal transformer is in the product.
- The LED's and transformer which are used in this product are in accordance with International Standards.
- 24 volt power consumption.
- For english / american plug request, please ask by ordering.
- Brightness of the lightning is between 2000-3000 LUX.
- It is easy to set up and has an optimal image changing system.
- Replaceable fabric with an elastic rubber band.
- Fabric can be made by request, as latex or UV printing.
- Is available in standard sizes and can also be made according to special sizes.
- Different frame colors available. On request, your own color samples can also be produced.
- The equipment for wall mounting will be sending with the product.
- Packaged as finished product.
- 2 years guarantee.
- Made in Turkey.

45 MM LIGHT BOX

Colours



elox silver

NEW



wood / 3901

NEW



wood / 3902

NEW



wood / 3903

NEW



wood / 3904

NEW



wood / 3905

Standart Sizes

A-4

A-3

A-2

A-1

A-0

B-2

B-1

B-0

100x120

120x180

200x300



Optional Control (ON-OFF)



★ Available in special sizes and colours



CE



THE WORLD'S FIRST
NON-FLAMMABLE
NATURAL WOOD COATED
MATERIAL



Illuminated



One sided



Backlight



Wall mountable





- Extra narrow frame with edgelight-LED technique for decorative application.
- Frame depth is 60 mm.
- For an impressive optic in the indoor area.
- One sided and double sided models available.
- The internal transformer is in the product.
- The LED's and transformer wich are used in this product are in accordance with International Standarts.
- 24 volt power consumption.
- For english / american plug request, please ask by ordering.
- Brightness of the lightning is between 2000-3000 LUX.
- It is easy to set up and has an optimal image changing system.
- Replaceable fabric with an elastic rubber band.
- Fabric can be made by request, as latex or UV printing.
- Is available in standard sizes and can also be made according to special sizes.
- Different frame colors available. On request, your own color samples can also be produced.
- The equipment for wall mounting will be sending with the product.
- This system is also available in disassembled version for easy transport.
- 2 years guarantee.
- Made in Turkey.

60 MM LIGHT BOX

Colours



elox silver

NEW



wood / 3901

NEW



wood / 3902

NEW



wood / 3903

NEW



wood / 3904

NEW



wood / 3905

Standart Sizes

A-3

A-2

A-1

A-0

B-2

B-1

B-0

100x120

120x180

200x300



Optional Control (ON-OFF)

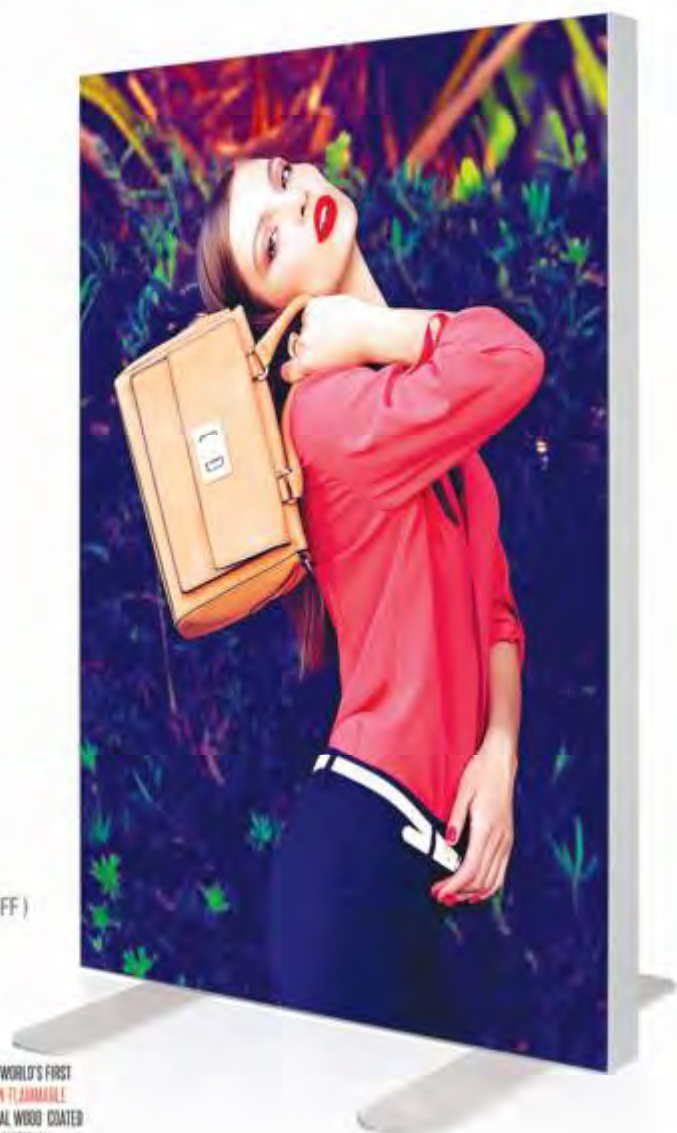
★ Available in special sizes and colours



CE



THE WORLD'S FIRST
NON FLAMMABLE
NATURAL WOOD COATED
MATERIAL



Illuminated



Double sided



Edgelight



Footed



Ceiling mountable





- Extra narrow frame with edgelight-LED technique for decorative application.
- Frame depth is 75 mm.
- For an impressive optic in the indoor area.
- One sided models available.
- The internal transformer is in the product.
- The LED's and transformer wich are used in this product are in accordance with International Standarts.
- 24 volt power consumption.
- For english / american plug request, please ask by ordering.
- 2000-3000LUX aralığında parlaklık sağlar.
- Brightness of the lightning is between 2000-3000 LUX.
- It is easy to set up and has an optimal image changing system.
- Replaceable fabric with an elastic rubber band.
- Fabric can be made by request, as latex or UV printing.
- Is available in standard sizes and can also be made according to special sizes.
- Different frame colors available. On request, your own color samples can also be produced.
- The equipment for wall mounting will be sending with the product.
- This system is also available in disassembled version for easy transport.
- 2 years guarantee.
- Made in Turkey.

75 MM LIGHT BOX

Colours



elox silver

NEW



wood / 3901

NEW



wood / 3902

NEW



wood / 3903

NEW



wood / 3904

NEW



wood / 3905

Standart Sizes

A-3

A-2

A-1

A-0

B-2

B-1

B-0

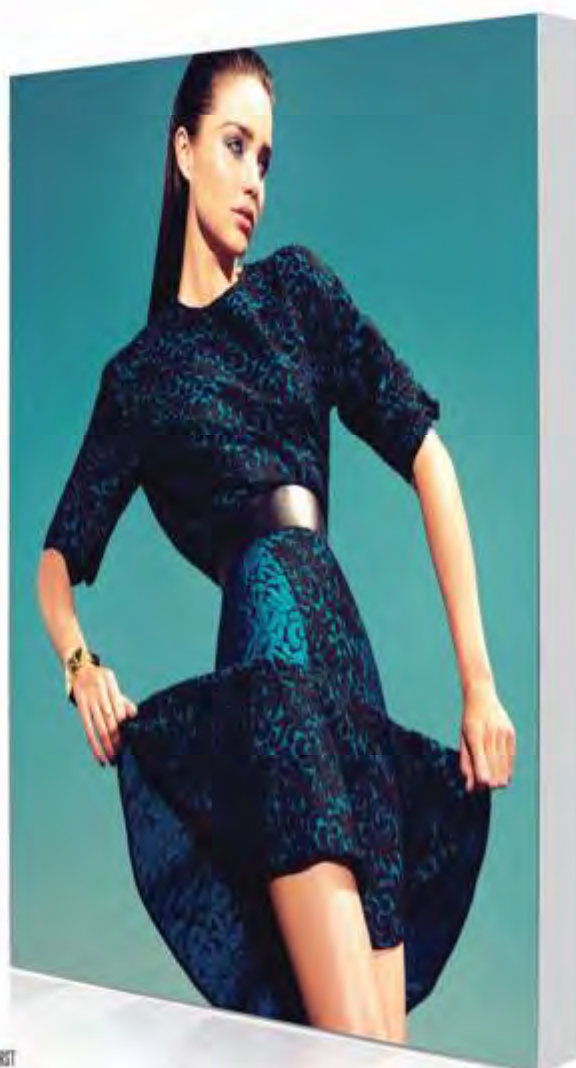
100x120

120x180

200x300



Optional Control (ON-OFF)



★ Available in special sizes and colours



CE



THE WORLD'S FIRST
NON-FLAMMABLE
NATURAL WOOD COATED
MATERIAL



Illuminated



One sided



Edgelight



Wall mountable





- Extra narrow frame with edgelight-LED technique for decorative application.
- Frame depth is 120 mm.
- For an impressive optic in the indoor area.
- One sided and double sided models available.
- The internal transformer is in the product.
- The LED's and transformer wich are used in this product are in accordance with International Standarts.
- 24 volt power consumption.
- For english / american plug request, please ask by ordering.
- Brightness of the lightning is between 2000-3000 LUX.
- It is easy to set up and has an optimal image changing system.
- Replaceable fabric with an elastic rubber band.
- Fabric can be made by request, as latex or UV printing.
- Is available in standard sizes and can also be made according to special sizes.
- Different frame colors available. On request, your own color samples can also be produced.
- The equipment for wall mounting will be sending with the product.
- This system is also available in disassembled version for easy transport.
- 2 years guarantee.
- Made in Turkey.

120 MM LIGHT BOX

Colours



elax silver

NEW



wood / 3901

NEW



wood / 3902

NEW



wood / 3903

NEW



wood / 3904

NEW



wood / 3905

Standart Sizes

A-2

A-1

A-0

B-2

B-1

B-0

100x120

120x180

200x300



Optional Control (ON-OFF)

★ Available in special sizes and colours



CE



THE WORLD'S FIRST
NON-FLAMMABLE
NATURAL WOOD COATED
MATERIAL



Illuminated



Double sided



Edgelight



Footed





- Extra narrow frame with edgelight-LED technique for decorative application.
- Frame depth is 200 mm.
- For an impressive optic in the indoor area.
- One sided and double sided models available.
- The internal transformer is in the product.
- The LED's and transformer wick are used in this product are in accordance with International Standarts.
- 24 volt power consumption.
- For english / american plug request, please ask by ordering.
- Brightness of the lightning is between 2000-3000 LUX.
- It is easy to set up and has an optimal image changing system.
- Replaceable fabric with an elastic rubber band.
- Fabric can be made by request, as latex or UV printing.
- Is available in standard sizes and can also be made according to special sizes.
- Different frame colors available. On request, your own color samples can also be produced.
- The equipment for wall mounting will be sending with the product.
- This system is also available in disassembled version for easy transport.
- 2 years guarantee.
- Made in Turkey.

200 MM LIGHT BOX

Colours



elox silver

NEW



wood / 3901

NEW



wood / 3902

NEW



wood / 3903

NEW



wood / 3904

NEW



wood / 3905

Standart Sizes

A-1

A-0

B-2

B-1

B-0

100x120

120x180

200x300



Optional Control (ON-OFF)

★ Available in special sizes and colours



CE



THE WORLD'S FIRST
NON-FLAMMABLE
NATURAL WOOD COATED
MATERIAL



Illuminated



Double sided



Edgelight



Footed



WOOD

LIGHT BOX

NEW

PRODUCT



The image is a graphic design set against a light-colored wood grain background. A large, solid brown circle is positioned in the center-right. Inside this circle, the words "NATURAL" and "WOOD" are stacked vertically in a bold, sans-serif, light brown font. To the right of the circle, the text "NATURAL WOOD LIGHT BOX" is written in a smaller, black, sans-serif font, following the curve of the circle's edge. Several dynamic, diagonal lines in black, white, and yellow extend from the right side of the brown circle across the wood background, creating a sense of motion and energy.

NATURAL WOOD

NATURAL WOOD LIGHT BOX



- Extra narrow frame for decorative application.
- All frames are made of natural wood.
- The wooden frame is protected by lacquer.
- Frame depth is 30 mm.
- For an impressive optic in the indoor area.
- One sided models available.
- It is easy to set up and has an optimal image changing system.
- Replaceable fabric with an elastic rubber band.
- Fabric can be made by request, as latex or UV printing.
- Is available in standard sizes and can also be made according to special sizes.
- Different frame colors available. On request, your own color samples can also be produced.
- The equipment for wall mounting will be sending with the product.
- This system is also available in disassembled version for easy transport.
- 2 years guarantee.
- Made in Turkey.

30 MM NATURAL WOOD



Colour



Standart
Sizes

A-4

A-3

A-2

A-1

A-0

B-2

B-1

B-0

100x120

120x180

200x300



★ Available in special sizes and colours



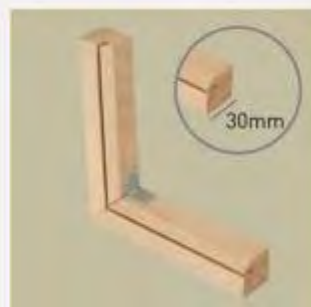
Non-Illuminated



One sided



Wall mountable





- Extra narrow frame with LED backlighting for decorative application.
- All frames are made of natural wood.
- The wooden frame is protected by lacquer.
- Frame depth is 45 mm.
- The backside is made of 4mm wood planking.
- For an impressive optic in the indoor area.
- One sided models available.
- The internal transformer is in the product.
- The LED's and transformer which are used in this product are in accordance with International Standards.
- 24 volt power consumption.
- For english / american plug request, please ask by ordering.
- Brightness of the lightning is between 2000-3000 LUX.
- It is easy to set up and has an optimal image changing system.
- Replaceable fabric with an elastic rubber band.
- Fabric can be made by request, as latex or UV printing.
- Is available in standard sizes and can also be made according to special sizes.
- Different frame colors available. On request, your own color samples can also be produced.
- The equipment for wall mounting will be sending with the product.
- This system is also available in disassembled version for easy transport.
- 2 years guarantee.
- Made in Turkey.

45 MM NATURAL WOOD



Colour



Standart
Sizes

A-4
A-3
A-2
A-1
A-0
B-2
B-1
B-0
100x120
120x180
200x300



Optional Control (ON-OFF)



★ Available in special sizes and colours



CE

TSE



Illuminated



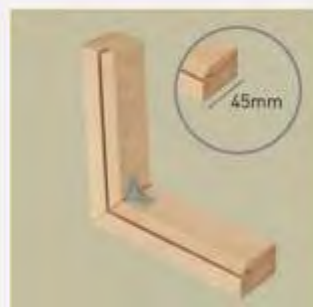
One sided



Backlight



Wall mountable





- Extra narrow frame with edgelight-LED technique for decorative application.
- All frames are made of natural wood.
- The wooden frame is protected by lacquer.
- Frame depth is 75mm.
- For an impressive optic in the indoor area.
- One sided models available.
- The internal transformer is in the product.
- The LED's and transformer wich are used in this product are in accordance with International Standarts.
- 24 volt power consumption.
- For english / american plug request, please ask by ordering.
- Brightness of the lightning is between 2000-3000 LUX.
- It is easy to set up and has an optimal image changing system.
- Replaceable fabric with an elastic rubber band.
- Fabric can be made by request, as latex or UV printing.
- Is available in standard sizes and can also be made according to special sizes.
- Different frame colors available. On request, your own color samples can also be produced.
- The equipment for wall mounting will be sending with the product.
- This system is also available in disassembled version for easy transport.
- 2 years guarantee.
- Made in Turkey.

75 MM NATURAL WOOD



Colour



Standart
Sizes

A-3
A-2
A-1
A-0
B-2
B-1
100x120



Optional Control (ON-OFF)

★ Available in special sizes and colours



CE



Illuminated



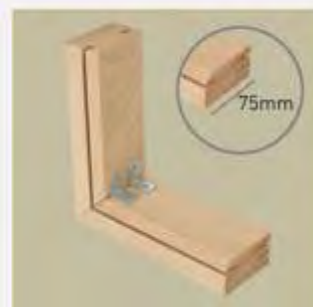
One sided



Edgelight



Wall mountable





- Extra narrow frame with edgelight-LED technique for decorative application.
- All frames are made of natural wood.
- The wooden frame is protected by lacquer.
- Frame depth is 120 mm.
- For an impressive optic in the indoor area.
- One sided and double sided models available.
- The internal transformer is in the product.
- The LED's and transformer which are used in this product are in accordance with International Standards.
- 24 volt power consumption.
- For english / american plug request, please ask by ordering.
- Brightness of the lightning is between 2000-3000 LUX.
- It is easy to set up and has an optimal image changing system.
- Replaceable fabric with an elastic rubber band.
- Fabric can be made by request, as latex or UV printing.
- Is available in standard sizes and can also be made according to special sizes.
- Different frame colors available. On request, your own color samples can also be produced.
- The equipment for wall mounting will be sending with the product.
- This system is also available in disassembled version for easy transport.
- 2 years guarantee.
- Made in Turkey.

120 MM NATURAL WOOD



Colour



Standart
Sizes

A-3
A-2
A-1
A-0
B-2
B-1
100x120



Optional Control (ON-OFF)

★ Available in special sizes and colours



Illuminated



Double sided

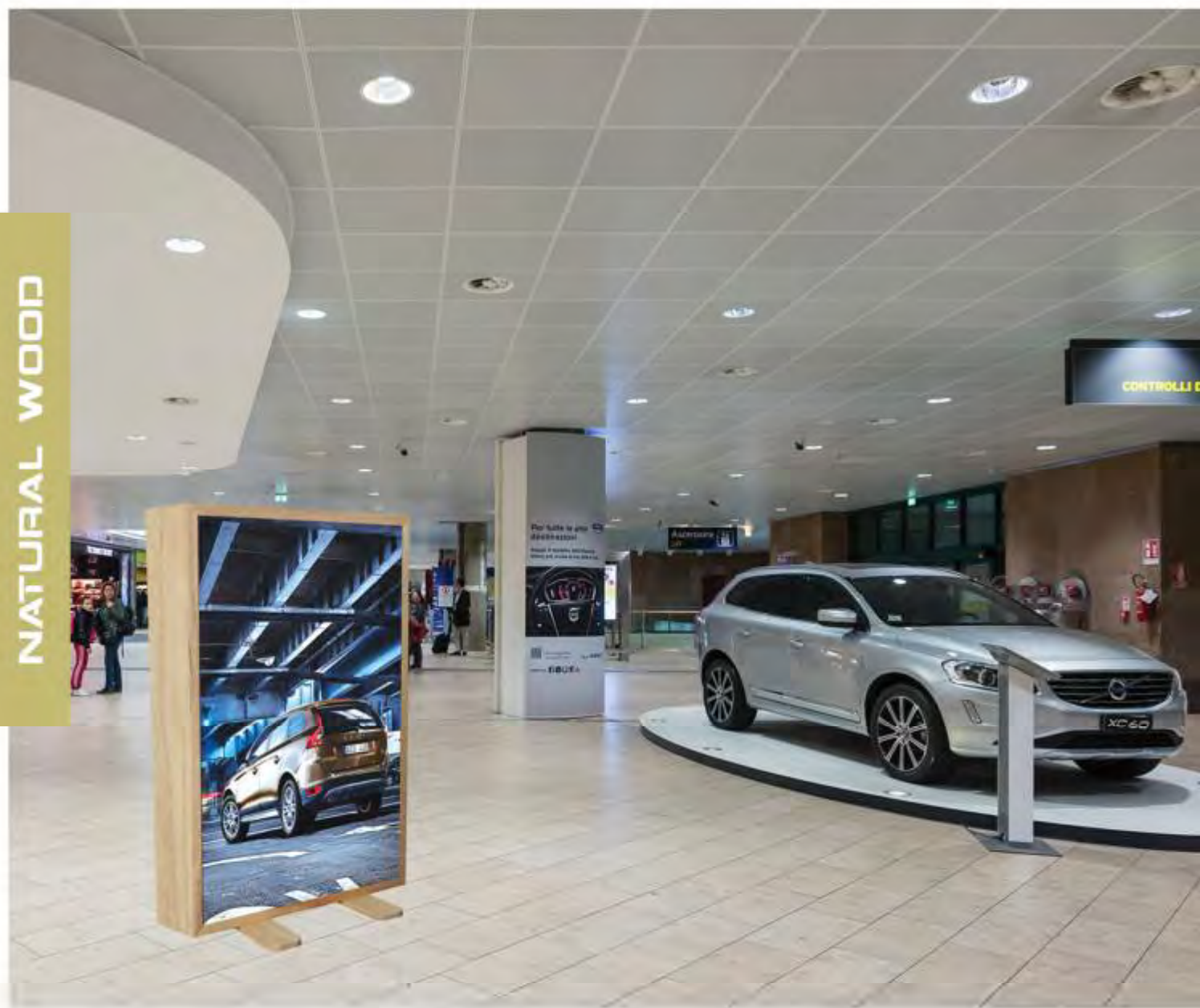


Edgelight



Footed





- Extra narrow frame with edgelight-LED technique for decorative application.
- All frames are made of natural wood.
- The wooden frame is protected by lacquer.
- Frame depth is 200 mm.
- For an impressive optic in the indoor area.
- One sided and double sided models available.
- The internal transformer is in the product.
- The LED's and transformer which are used in this product are in accordance with International Standards.
- 24 volt power consumption.
- For english / american plug request, please ask by ordering.
- Brightness of the lightning is between 2000-3000 LUX.
- It is easy to set up and has an optimal image changing system.
- Replaceable fabric with an elastic rubber band.
- Fabric can be made by request, as latex or UV printing.
- Is available in standard sizes and can also be made according to special sizes.
- Different frame colors available. On request, your own color samples can also be produce
- 2 years guarantee.
- Made in Turkey.

200 MM NATURAL WOOD



Colour



wood

Standart Sizes

A-1

A-0

B-2

B-1

B-0

100x120

120x180

200x300



Optional Control (ON-OFF)

★ Available in special sizes and colours



CE



Illuminated



Double sided



Edgelight



Footed



CUSTOM DESIGN

LIGHT BOX



NEW

PRODUCT



The background is a light gray with a pattern of thin, diagonal white lines. A large, solid blue circle is centered in the upper half of the image. From the bottom-left edge of this circle, a series of thick, black, diagonal streaks extend towards the bottom-left corner of the frame. Interspersed among these black streaks are several thinner, white diagonal lines, creating a sense of motion and depth.

CUSTOM DESIGN LIGHT BOX

CUSTOM DESIGN LIGHT BOX



- Four-sided light column with extra narrow frame and edgelight LED technique.
- Frame depth is 120mm.
- Decorative base in stainless steel.
- For an impressive optic in the indoor area,
- The internal transformer is in the product.
- The LED's and transformer wich are used in this product are in accordance with International Standarts.
- 24 volt power consumption.
- For english / american plug request, please ask by ordering.
- Brightness of the lightning is between 2000-3000 LUX.
- It is easy to set up and has an optimal image changing system.
- Replaceable fabric with an elastic rubber band.
- Fabric can be made by request, as latex or UV printing.
- Is available in standard sizes and can also be made according to special sizes.
- Different frame colors available. On request, your own color samples can also be produced.
- This system is also available in disassembled version for easy transport. Remote control for power
- on and off is optional.
- 2 years guarantee.
- Made in Turkey.

CUSTOM DESIGN - ALYA



Illuminated



Double sided



Edgelight



Footed





- Decorative totem with extra narrow frame.
- Frame depth is 120mm.
- Decorative base in stainless steel.
- For an impressive optic in the indoor area.
- It can rotate 360 degrees around itself.
- Double sided models available.
- Replaceable fabric with an elastic rubber band.
- Fabric can be made by request, as latex or UV printing.
- Is available in standard sizes and can also be made according to special sizes.
- Different frame colors available. On request, your own color samples can also be produced.
- This system is also available in disassembled version for easy transport.
- 2 years guarantee.
- Made in Turkey.

CUSTOM DESIGN - SARP

360°



Colour



elox silver

★ Available in special sizes and colours



Non-Illuminated



Double sided



Edgelight



Footed





CUSTOM DESIGN

- Three-sided light column with extra narrow frame and edgelight LED technique.
- Frame depth is 120mm.
- For an impressive optic in the indoor area.
- One sided and double sided models available.
- The internal transformer is in the product.
- 24 volt power consumption.
- For english / american plug request, please ask by ordering.
- Brightness of the lightning is between 2000-3000 LUX.
- It is easy to set up and has an optimal image changing system.
- Replaceable fabric with an elastic rubber band.
- Fabric can be made by request, as latex or UV printing.
- Is available in standard sizes and can also be made according to special sizes.
- Different frame colors available. On request, your own color samples can also be produced.
- This system is also available in disassembled version for easy transport. Remote control for power on and off is optional.
- 2 years guarantee.
- Made in Turkey.

CUSTOM DESIGN - ELA



Colour



elox silver



Optional Control (ON-OFF)

★ Available in special sizes and colours



Illuminated



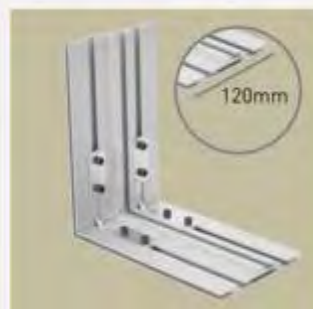
Double sided

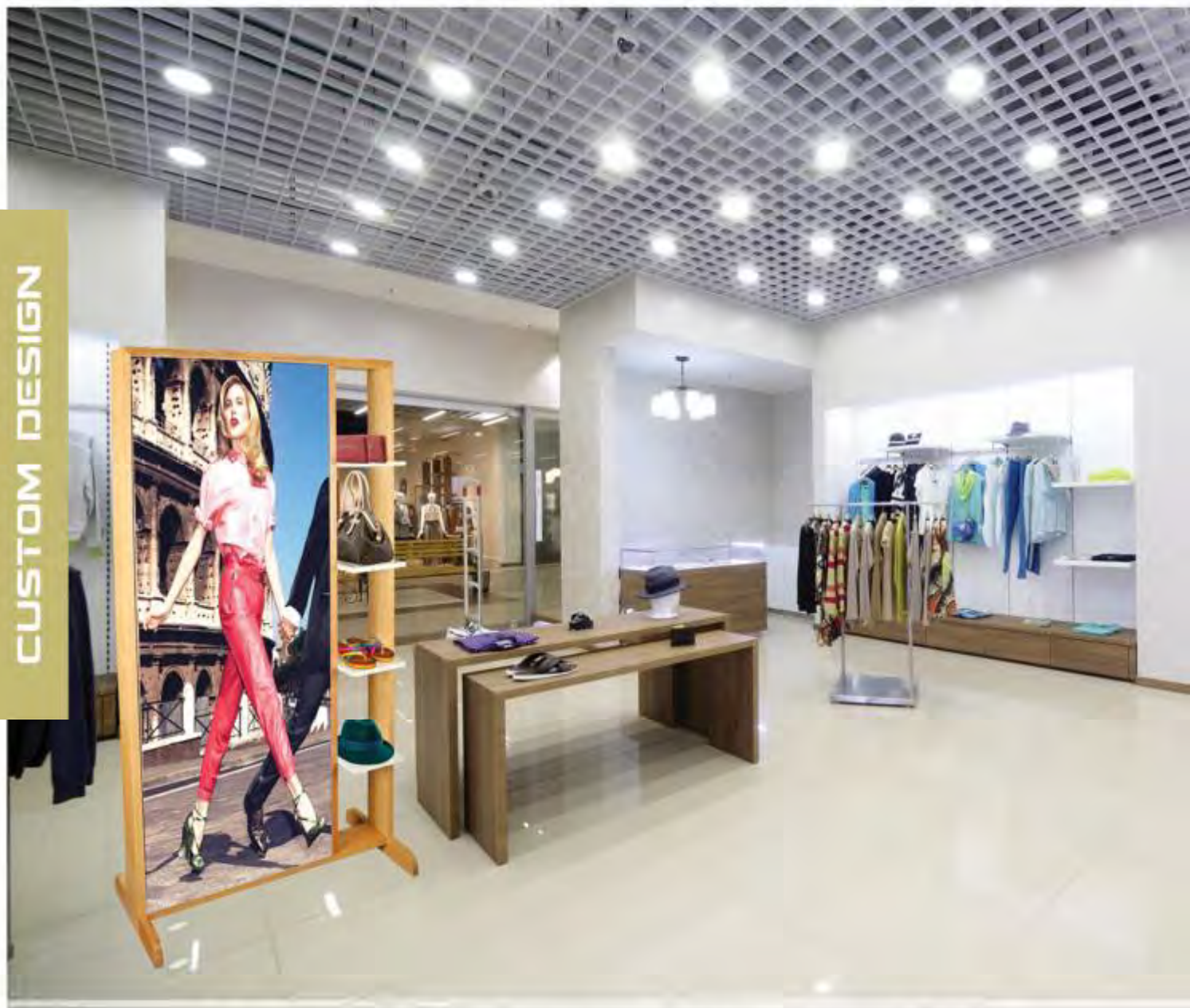


Edgelight



Footed





- This illuminated stand has an extra narrow frame with edgelight LED technique for decorative application.
- Wooden shelves are for showing products.
- All stand is made of natural wood.
- The wooden stand is protected by lacquer.
- Stand depth is 120 mm.
- One sided and double sided models available.
- The internal transformer is in the product.
- The LED's and transformer which are used in this product are in accordance with International Standards.
- 24 volt power consumption.
- For english / american plug request, please ask by ordering.
- Brightness of the lightning is between 2000-3000 LUX.
- It is easy to set up and has an optimal image changing system.
- Replaceable fabric with an elastic rubber band.
- Fabric can be made by request, as latex or UV printing.
- Is available in standard sizes and can also be made according to special sizes.
- Different frame colors available. On request, your own color samples can also be produced.
- Remote control for power on and off is optional.
- This system is also available in disassembled version for easy transport.
- 2 years guarantee.
- Made in Turkey.

CUSTOM DESIGN - NERGIS

Colour



Optional Control (ON-OFF)

★ Available in special sizes and colours



CE



Illuminated



Double sided



Edgelight



Footed





- This illuminated stand has an extra narrow frame with edgelight LED technique for decorative application.
- Wooden shelves are for showing products.
- All stand is made of natural wood.
- The wooden stand is protected by lacquer.
- Stand depth is 120 mm.
- One sided and double sided models available.
- The internal transformer is in the product.
- The LED's and transformer which are used in this product are in accordance with International Standards.
- 24 volt power consumption.
- For english / american plug request, please ask by ordering.
- Brightness of the lightning is between 2000-3000 LUX.
- It is easy to set up and has an optimal image changing system.
- Replaceable fabric with an elastic rubber band.
- Fabric can be made by request, as latex or UV printing.
- Is available in standard sizes and can also be made according to special sizes.
- Different frame colors available. On request, your own color samples can also be produced.
- Remote control for power on and off is optional.
- This system is also available in disassembled version for easy transport.
- 2 years guarantee.
- Made in Turkey.

CUSTOM DESIGN - DESA



Illuminated



Double sided



Edgelight



Footed





- This illuminated stand has an extra narrow frame with edgelight Led technique for decorative application.
- Wooden shelves for showing products.
- Frame depth is 120mm.
- For an impressive optic in the indoor area.
- One sided and double sided models available.
- The internal transformer is in the product.
- The LED's and transformer wich are used in this product are in accordance with International Standarts.
- 24 volt power consumption.
- For english / american plug request, please ask by ordering.
- Brightness of the lightning is between 2000-3000 LUX.
- It is easy to set up and has an optimal image changing system.
- Replaceable fabric with an elastic rubber band.
- Fabric can be made by request, as latex or UV printing.
- Is available in standard sizes and can also be made according to special sizes.
- Different frame colors available. On request, your own color samples can also be produced.
- This system is also available in disassembled version for easy transport. Remote control for power on and off is optional.
- 2 years guarantee.
- Made in Turkey.

CUSTOM DESIGN - RINA



Illuminated



Double sided



Edgelight



Footed





- The easy-to-open and foldable frame allows a quick change of your image.
- For indoor use.
- 3mm high opaque acrylic glass. Anti-reflective PET protection prevents glare and deterioration from the poster.
- Box width is 18mm.
- Through illumination, photos and posters can be displayed elegantly.
- The equipment for wall mounting is for horizontal and vertical use.
- All materials are CE certified.
- The external transformer is outside of the product.
- The LED's and transformer which are used in this product are in accordance with International Standards.
- 12 volt power consumption.
- For english / american plug request, please ask by ordering.
- Brightness of the lightning is between 1700-2500 LUX.
- Is available in standard sizes and can also be made according to special sizes.
- Different frame colors available. On request, your own color samples can also be produced.
- 2 years guarantee.
- Made in Turkey.

LED BOX SINGLE SIDED

Colour

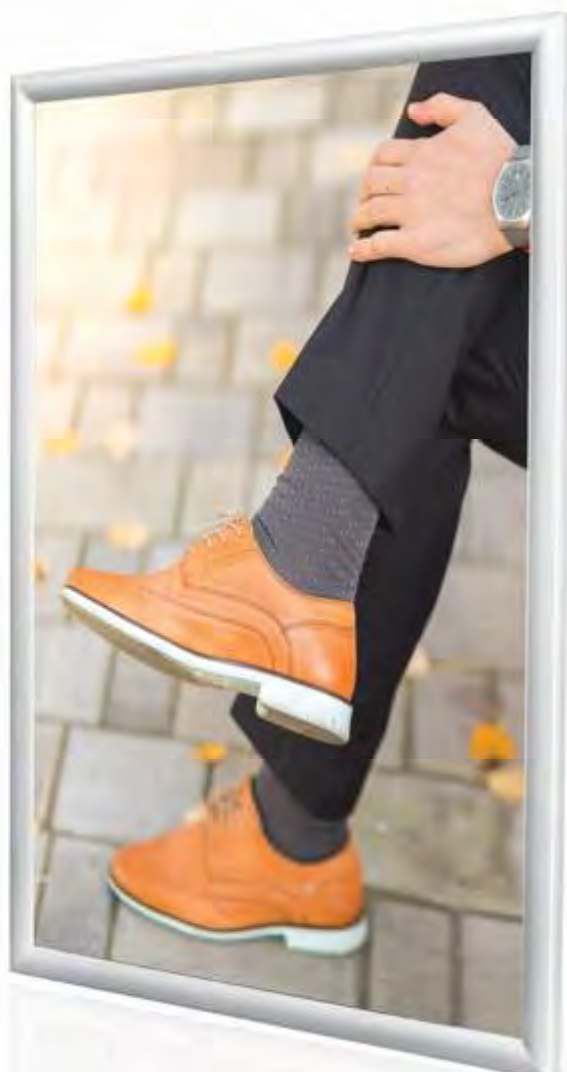


elox silver

Standart Sizes

A-4
A-3
A-2
A-1
A-0
B-2
B-1

★ Available in special sizes and colours



Illuminated



One sided



Backlight



Wall mountable





- The easy-to-open and foldable frame allows a quick change of your image..
- For indoor use.
- 3mm high opaque acrylic glass. Anti-reflective PET protection prevents glare and deterioration from the poster.
- Box width is 30mm.
- Through illumination, photos and posters can be displayed easily.
- The equipment for wall mounting is for horizontal and vertical use.
- All materials are CE certified.
- The external transformer is outside of the product.
- The LED's and transformer wich are used in this product are in accordance with International Standarts.
- 12 volt power consumption.
- For english / american plug request, please ask by ordering.
- Brightness of the lightning is between 1700-2500 LUX.
- Is available in standard sizes and can also be made according to special sizes.
- Different frame colors available. On request, your own color samples can also be produced.
- 2 years guarantee.
- Made in Turkey.

LED BOX DOUBLE SIDED

Colour



elox silver

Standart Sizes

A-4

A-3

A-2

A-1

A-0

B-2

B-1



★ Available in special sizes and colours



Illuminated



Double sided



Backlight



Ceiling mountable



PRINT



PRINT MACHINE



The prints used in ONE light box products are Hp Latex technology, which delivers real colours at 1200 dpi resolution



GREENGUARD

PRODUCT CERTIFIED FOR
LOW CHEMICAL EMISSIONS
UL.COM/DE
UL 2818

GOLD



ECOLOGO

PRODUCT CERTIFIED FOR
REDUCED ENVIRONMENTAL
IMPACT. VIEW SPECIFIC
ATTRIBUTES EVALUATED
UL.COM/EL
UL 2801

ONE
LIGHTBOX

PACKAGE

The boxes for packing are made of 9mm thin wood.
The boxes are made for each product specially.
The inside of the boxes are supported by a styrofoam.
This product will be sent disassembled.



PROFILES



17 mm



30 mm



50 mm



45 mm



60 mm



75 mm



120 mm



200 mm



30 mm



45 mm



75 mm



120 mm



200 mm

BRANDS OF THE EQUIPMENT WE USE



ONE LIGHTBOX

The bright way to shine

